

PARIS COMPLIANT: DEVELOPMENT PHASE  
Country of Origin: DRC, Africa  
CDM Sectoral Scope # 14  
Paris Agreement: 6.2 & 6.4 Mechanisms  
Project Name: GIERI Shabunda Project  
Project Number: DRC\_DRC-04-pk  
Vintage: 2017 (91,000 hectares)  
Token ID: PAC\_GIERI  
Off-Chain Audit Documents & Updates:  
[www.planetalphaforest.earth](http://www.planetalphaforest.earth)



**-40**  
tCO<sub>2</sub>  
hectare/year  
2017

Direct CO<sub>2</sub>  
Satellite  
Measurement  
91,000 hectares  
Traceability:  
System of Intl Units



**Purchase  
Offsets Here**

## Shabunda Portfolio Snapshot: 11-01-2023 Gross Portfolio Value (Est.) \$185,640,000 (2017) Benchmark: MODIS, OCO-2

Carbon Price (Hectare/Year)				Duration				Sky & Forest Initiative				Land Area (91,000 hectares)				Biosphere Category			
	Growth	Blend	Value		Growth	Blend	Value		Solar	EV EVTOL	Wash		Growth	Blend	Value		Terr	Coastal	Oceanic
< \$5 - 10	0	0	0	10 YRS	0	0	0	1 - 10 YRS	✓	✓	✓	L	0	0	0	10 YRS	0	0	0
\$11-51^	0	0	100%	11 - 30 YRS	0	0	100%	11 - 30 YRS	↓	↓	↓	M	0	0	0	11 - 30 YRS	100%	0	0
\$52+	0	0	0	31 - 50 yrs	0	0	0	31 - 50 yrs	↓	↓	↓	S	0	0	100%	31 - 50 YRS	0	0	0

[Growth-Reforestation, Agriculture; Value-Managed Forests; Blend-Mix]  
^Social Cost Pricing \$51, 3% Discount

[EV= Electric Vehicle; EVTOL-Electric Vertical Take Off & Landing]

Large > 1 million ha; Medium < 500,000 ha; Small < 100,000 ha

Terr-All land, rivers, lakes; Coastal-Mangroves, estuaries; Oceanic-All

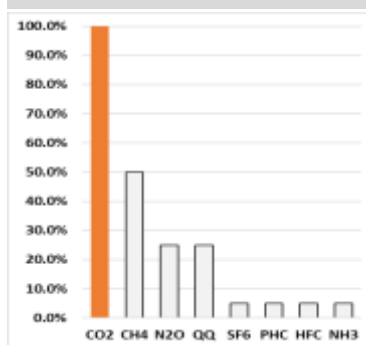
### Biosphere Box Sectors

Carbon Sequestration	Sector (%)	Price tCO <sub>2</sub> (hectare)	Hectares	Years	Growth (%)	Blend (%)	Value (%)	tCO <sub>2</sub> /ha/yr	REVENUE ESTIMATED
α-BOT α-Biosphere Offset Token: Net C Flux Offset									
RF	Reforestation	TBD	\$51.00	TBD	2017	TBD	TBD	TBD	0
AF	Afforestation	TBD	\$51.00	TBD	2017	TBD	TBD	TBD	0
AG	Agroforestry	TBD	\$51.00	TBD	2017	TBD	TBD	TBD	0
WF	Working Forest	TBD	\$51.00	TBD	2017	TBD	TBD	TBD	0
FM	Forest Management	100	\$51.00	TBD	2017	TBD	TBD	TBD	0
<b>TOTAL</b>	<b>Active Sequestration</b>	<b>100</b>	<b>\$51.00</b>	<b>91,000</b>	<b>2017</b>	<b>TBD</b>	<b>TBD</b>	<b>TBD</b>	<b>-40</b>
<b>TOTAL REVENUE ALL SECTORS (Pre-Tax, Gross)</b>									<b>\$185,640,000</b>

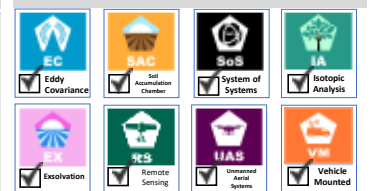
#### Planet Alpha Corp. Protocol Notes

- [1] In the absence of this project rainforest would likely be deforested satisfying additional criteria.
- [2] This part of the Congo Basin, the Shabunda region, has an established sedimentary record of continuous forest coverage for the last thousand years and is expected to remain forested for several hundred years, at a minimum. In the interim, damage to the rainforest ecosystem is cyclically self-restored, reasonably satisfying the permanence criteria.
- [3] Leakage is an unknown but will be monitored with both CO<sub>2</sub> and mapping satellite data on an annual basis.
- [4] The alpha-Biosphere Offset Token (α-BOT) is based on actual direct measurement of NET forest CO<sub>2</sub> flux based on satellite and ground based monitoring platforms. All data is freely available and is traceable to the International System of Units ensuring comparability for offsets across the globe. Data quality is confirmed by redundant quality assurance and quality control programs operating during data acquisition and release of offset data. Ground stations will be placed strategically to support local communities with small scale projects and with additional features such as biodiversity, water quality and improved agricultural productivity. The annual data establishes a time-series baseline that records net positive, net negative, or net neutral status for the project.
- [5] Buyers of the Shabunda offset tokens are urged to decarbonize as well as offset emissions in a responsible and achievable manner.
- [6] Each offset will be tagged and marked on a banking level encrypted ledger, operating much like a bank account, preventing double counting. All offsets sold are burned from the offset inventory. In addition, the α-BOT may be bridged to the blockchain and transformed into non-fungible tokens for transaction on the web3.
- [7] The Shabunda project is managed by Indigenous Peoples and Tribal Authorities on the ground across the project area, supporting inclusion and equity for local forest communities.
- [8] For more information visit:  
<https://planetalphaforest.earth/listings-new/shabunda-region-democratic-republic-of-congo-2/>

### GHG Asset Allocation



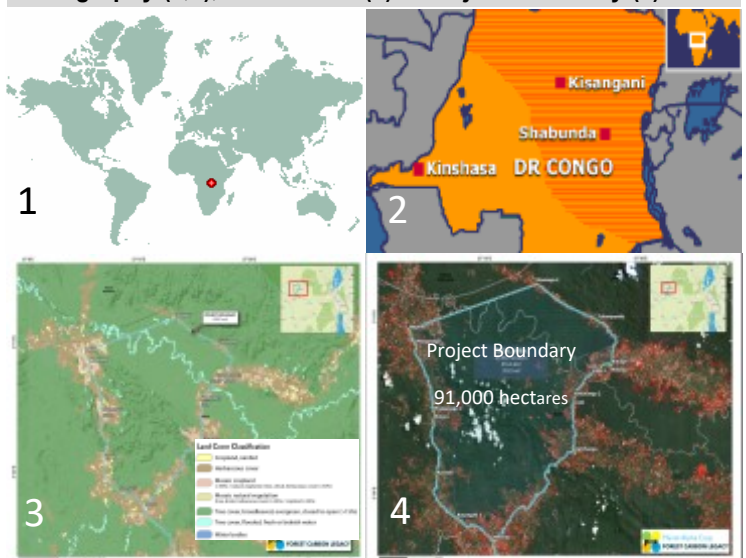
### Methods



### Status



### Geography (1,2), Land Cover (3) & Project Boundary (4)



#### Planet Alpha Sheet Notes

**Paris Compliant:** The project intends to meet upcoming compliance measures.

**Blockchain Status:** The project intends to employ low-energy Proof-of-Stake blockchain consensus methods.

**Carbon Price:** Price is set according to in-country cost for carbon program, demand and external carbon pricing.

**Land Area:** Large > 1M, Medium > 500k, Small < 500k hectares.

**Duration:** Project duration assigned by contract.

**Biosphere Category:** Terrestrial zones include lakes and rivers, coastal zones include mangroves and estuaries.

**GHG Asset Allocation:** Each GHG is defined as an independent asset class, % equals approx. project area monitored directly by eddy covariance or satellite (no estimation protocols are employed); applies to all active sequestration project activity. Avoided emissions projects are based upon project area verified by project boundaries (no carbon credit estimation protocols are employed). QQ refers to quantum carbon or the isotopes 13CO<sub>2</sub> and 14CO<sub>2</sub>. The shaded items are in the planning stage.

**Methods:** GHG's are quantified by methods with a checkmark. See: How Does PaC Work? - (<https://planetalphaforest.earth/about/how-it-works/>)

**Status:** Project status is identified with checkmark (A = agent, MoU = Memorandum of Understanding, PLA = Project Listing α-Biosphere Offset Token, PMA = Project Management Agreement (<https://planetalphaforest.earth/about/how-it-works/>)).

**Project Location:** 1) Global, 2) DRC perspective, 3) Green Shading IGB = Tree cover, broadleaved, evergreen, closed to open >15%, 4) Red shading represents deforestation (2000-2012).

Additional information can be found at [www.planetalphaforest.earth](http://www.planetalphaforest.earth)